



# Journal of Frontiers in Multidisciplinary Research

## AI-Based Traffic Congestion Prediction in Smart Cities: Machine Learning Architectures, Real-Time Data Integration, and Intelligent Urban Mobility Optimization Systems

Mr. Waleed Noman Alhajri

CIO, Real Estate Digital Transformation Advisor, Saudi Arabia

\* Corresponding Author: Mr. Waleed Noman Alhajri

---

---

### Article Info

E-ISSN: 3050-9726

P-ISSN: 3050-9718

Volume: 06

Issue: 02

July – December 2025

Received: 09-06-2025

Accepted: 11-07-2025

Published: 13-08-2025

Page No: 583-588

### Abstract

The proliferation of urban vehicles and the resultant traffic congestion have necessitated advanced predictive solutions within smart city frameworks, where artificial intelligence serves as the foundational technology for proactive transportation management. This article examines the integration of machine learning architectures, real-time data streams, and intelligent optimization systems for traffic congestion prediction in urban environments. The analysis encompasses supervised learning models including support vector machines and gradient boosting, alongside deep learning architectures such as long short-term memory networks, convolutional neural networks, graph convolutional networks, and transformer-based models that capture spatiotemporal dependencies inherent in traffic dynamics. Data acquisition mechanisms utilizing Internet of Things sensors, traffic cameras, GPS-enabled devices, and connected vehicle infrastructure provide the high-resolution inputs necessary for real-time analytics. Prediction mechanisms span short-term forecasting for immediate traffic signal adjustment and long-term prediction for urban planning, with reinforcement learning enabling adaptive signal control optimization. Major applications include adaptive traffic management systems, dynamic route guidance, and environmental impact reduction through congestion mitigation. The article concludes by identifying persistent challenges including data privacy vulnerabilities, model interpretability limitations, and scalability constraints, while emphasizing that hybrid architectures combining multiple AI paradigms offer the most promising trajectory for next-generation intelligent transportation systems.

DOI: <https://doi.org/10.54660/JFMR.2026.7.1.120-125>

**Keywords:** traffic congestion prediction; deep learning; smart cities; real-time data analytics; intelligent transportation systems; spatiotemporal modeling

---

---

### 1. Introduction

Artificial intelligence has emerged as the central enabling technology for urban mobility management, fundamentally transforming how cities address the escalating challenge of traffic congestion <sup>[1]</sup>. The convergence of machine learning capabilities with ubiquitous sensing infrastructure has created unprecedented opportunities for predictive traffic intelligence that operates in real time <sup>[2]</sup>. Intelligent transportation systems increasingly depend on AI-driven predictions to optimize network performance, reduce travel delays, and enhance overall urban livability <sup>[3]</sup>.

The imperative for accurate traffic congestion prediction stems from the severe economic, environmental, and social costs associated with urban gridlock. Congestion imposes substantial productivity losses, increases fuel consumption and vehicle emissions, and degrades emergency response times <sup>[4]</sup>. Traditional reactive approaches to traffic management have proven insufficient given the complex, nonlinear, and dynamic nature of urban traffic systems <sup>[5]</sup>. Predictive capabilities enable a paradigm shift from reactive signal timing to proactive network-wide optimization <sup>[6]</sup>.

This article focuses specifically on AI-based methodologies for traffic congestion prediction within smart city contexts. The scope encompasses machine learning architectures designed to process heterogeneous data sources, real-time integration frameworks that enable low-latency analytics, and optimization mechanisms that translate predictions into actionable traffic

control strategies. The discussion emphasizes technical approaches while maintaining focus on practical deployment considerations and system-level integration [7].

## 2. AI Frameworks for Traffic Congestion Prediction

### 2.1. Supervised Machine Learning Models

Traditional supervised learning approaches established the foundation for data-driven traffic prediction before the widespread adoption of deep learning. Support vector machines demonstrate effectiveness in capturing nonlinear relationships in traffic data through kernel functions that map inputs to high-dimensional feature spaces [8]. Random forest and gradient boosting machines excel at handling heterogeneous data types and providing interpretable feature importance measures, though their predictive accuracy diminishes for long forecasting horizons [9]. These models remain relevant for scenarios with limited training data or where model interpretability is prioritized over maximal predictive performance [10].

### 2.2. Deep Learning Architectures

Deep learning has revolutionized traffic congestion prediction through architectures specifically designed to capture the complex spatiotemporal patterns inherent in traffic systems [11]. Recurrent neural networks, particularly long short-term memory networks and gated recurrent units,

address the temporal dependencies in traffic time series by maintaining internal memory states that capture both short-term fluctuations and longer-term periodicities [12, 13]. These models effectively learn daily and weekly traffic patterns while adapting to real-time conditions [14].

Convolutional neural networks have been adapted from image processing to capture spatial dependencies in traffic networks by treating traffic matrices as two-dimensional images where spatial proximity reflects road network adjacency [15]. Graph convolutional networks represent a significant advancement by operating directly on graph-structured data, modeling urban road networks as graphs where nodes represent road segments or intersections and edges represent physical connectivity [16, 17]. This architecture naturally captures the propagation of congestion through network topology.

Transformer models, originally developed for natural language processing, have demonstrated exceptional performance in traffic prediction through their self-attention mechanisms that capture dependencies across all time steps simultaneously [18]. These models excel at identifying long-range temporal patterns and have been extended to incorporate spatial attention for comprehensive spatiotemporal modeling [19]. Table 1 summarizes the principal machine learning and deep learning architectures applied to traffic congestion prediction.

**Table 1:** Machine learning and deep learning models used in traffic congestion prediction

Model Category	Specific Architectures	Primary Strengths	Typical Applications
Traditional ML	SVM, Random Forest, XGBoost	Interpretability; efficient with small datasets	Baseline prediction; feature selection
Recurrent Networks	LSTM, GRU, BiLSTM	Temporal dependency modeling	Short-term flow prediction; speed forecasting
Convolutional Networks	CNN, 1D-CNN, TCN	Spatial feature extraction	Traffic matrix prediction; congestion pattern recognition
Graph-Based Models	GCN, GAT, DCRNN	Network topology integration	Network-wide prediction; congestion propagation
Attention Mechanisms	Transformer, ST-GAT	Long-range dependency capture	Multi-step forecasting; incident impact prediction

### 2.3. Hybrid and Ensemble Approaches

Hybrid architectures that combine multiple neural network paradigms achieve superior performance by leveraging complementary strengths [20]. CNN-LSTM models utilize convolutional layers to extract spatial features followed by recurrent layers to model temporal evolution, capturing both dimensions simultaneously [21]. Graph convolutional networks combined with recurrent units enable processing of spatiotemporal graph data where both network structure and temporal dynamics are critical [22]. Ensemble methods that aggregate predictions from multiple diverse models improve robustness and reduce prediction variance, particularly valuable for handling the stochastic nature of traffic incidents [23].

## 3. Data Sources and Real-Time Integration

### 3.1. IoT Sensors and Traffic Cameras

Internet of Things infrastructure provides the foundational data layer for AI-based congestion prediction [24]. Inductive loop detectors embedded in roadways measure vehicle presence, count, and speed with high accuracy but limited spatial coverage [25]. Traffic cameras equipped with computer vision algorithms enable comprehensive vehicle detection, classification, and tracking across extensive urban areas [26].

Advanced multi-task convolutional neural networks achieve vehicle localization accuracy exceeding 98% while maintaining real-time processing speeds below 25 milliseconds per frame, enabling continuous monitoring of traffic conditions under varying lighting and weather conditions [27, 28].

### 3.2. GPS and Mobile Data

Probe vehicle data from GPS-equipped fleets and mobile devices provides extensive coverage of urban road networks at lower installation costs than fixed sensors [29]. Ride-hailing services, delivery fleets, and connected vehicles generate continuous trajectory data that reveals actual travel times and route choices [30]. Mobile network data, while lower in positional accuracy, offers unprecedented scale by leveraging the ubiquity of cellular devices. The fusion of these diverse data sources through big data platforms enables comprehensive situational awareness that surpasses any single sensing modality [31].

### 3.3. Big Data Platforms and Edge Computing

Real-time congestion prediction requires data architectures capable of ingesting, processing, and analyzing massive streams of heterogeneous traffic data with minimal latency [32]. Cloud-based platforms provide scalable storage and

computational resources for model training and historical analysis, while edge computing nodes deployed at roadside units enable low-latency inference for time-critical applications such as signal control [33]. Federated learning

frameworks allow collaborative model training across multiple edge nodes without centralizing sensitive data, addressing both privacy concerns and communication bandwidth limitations [34, 35].

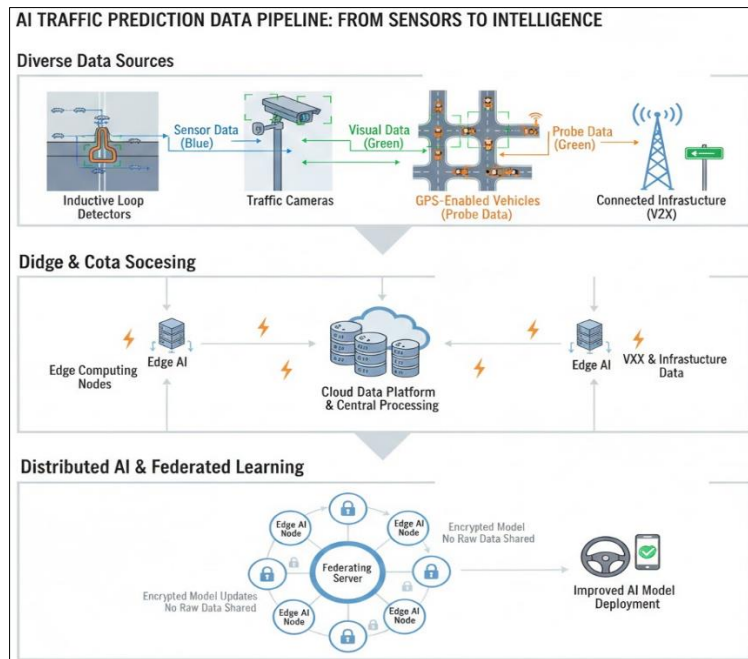


Fig 1: Multi-Source Data Integration Framework for Real-Time Traffic Analytics

#### 4. Prediction Mechanisms and Optimization Strategies

##### 4.1. Short-Term versus Long-Term Forecasting

Traffic prediction horizons determine appropriate modeling approaches and application domains. Short-term forecasting, ranging from seconds to one hour ahead, supports real-time traffic management including adaptive signal control and dynamic message sign guidance [36]. These predictions require models that respond rapidly to emerging conditions while maintaining stability. Long-term forecasting, spanning multiple hours to days, informs urban planning, construction scheduling, and demand management policies [37]. Such predictions must incorporate external factors including weather forecasts, special events, and seasonal patterns that influence travel behavior [38].

##### 4.2. Spatiotemporal Modeling

The fundamental challenge in traffic prediction lies in simultaneously capturing spatial dependencies across road networks and temporal dynamics across multiple time scales [39]. Spatial dependencies arise from congestion propagation along corridors, intersection interactions, and network-wide flow redistribution following incidents [40]. Temporal patterns exhibit daily commuting rhythms, weekly cycles, and holiday effects, superimposed with stochastic variations from accidents and weather. Advanced spatiotemporal models integrate graph neural networks for spatial processing with recurrent or attention mechanisms for temporal modeling, enabling unified representation of these intertwined dimensions [41, 42].

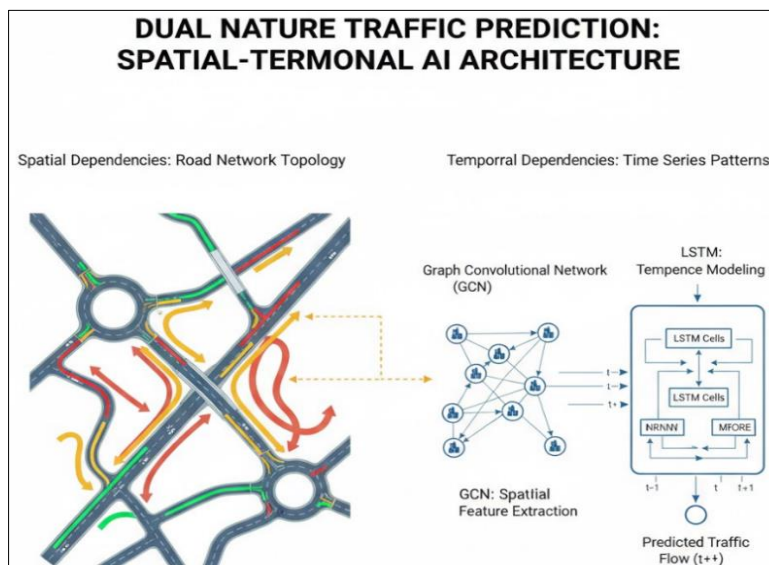


Fig 2: Spatiotemporal Traffic Congestion Prediction Architecture

### 4.3. Reinforcement Learning for Traffic Signal Control

Reinforcement learning has emerged as a powerful paradigm for translating congestion predictions into optimized control actions [43]. Deep reinforcement learning agents learn optimal signal timing policies through interaction with traffic environments, balancing competing objectives including delay minimization, queue length reduction, and network throughput maximization [44]. Multi-agent reinforcement learning extends this approach to network-wide coordination, where independent signal controllers learn cooperative policies that achieve global optimization without centralized computation [45]. These systems leverage congestion predictions to anticipate future states and proactively adjust signal timing before congestion materializes [46].

## 5. Applications in Smart Cities

### 5.1. Adaptive Traffic Management

AI-powered congestion prediction enables a new generation of adaptive traffic management systems that continuously optimize network operations [47]. Real-time predictions inform dynamic signal timing adjustments that respond to evolving traffic patterns, reducing delays at intersections and smoothing traffic flow along corridors [48]. Ramp metering systems utilize predictions to regulate highway access, preventing breakdown conditions at merge points. Variable speed limits, guided by congestion forecasts, harmonize speeds to delay or prevent flow breakdown [49]. Table 2 summarizes the advantages and limitations of AI-based congestion prediction systems across these application domains.

**Table 2:** Advantages and limitations of AI-based traffic congestion prediction systems

Application Domain	Key Advantages	Principal Limitations
Adaptive Signal Control	Real-time responsiveness; reduced delays	Coordination complexity; sensor dependency
Route Guidance	Individual travel time savings; improved network utilization	Compliance variability; rebound congestion
Incident Management	Rapid detection; impact prediction	Data sparsity for rare events; false alarms
Emissions Reduction	Quantifiable environmental benefits	Indirect control mechanisms; verification challenges
Public Transport Priority	Improved reliability; modal shift incentive	Competing objectives with general traffic

### 5.2. Route Optimization and Traveler Information

Congestion predictions enable dynamic route guidance that helps travelers avoid delays and distributes demand across network capacity [50]. Navigation applications leverage predictive models to recommend routes minimizing expected travel time, considering both current conditions and anticipated congestion evolution. Predictive traveler information, delivered through mobile applications and variable message signs, influences departure time choices and mode selection, contributing to demand management objectives.

### 5.3. Environmental Impact Reduction

Traffic congestion directly correlates with increased vehicle emissions due to stop-and-go operation and prolonged idling. AI-based congestion prediction contributes to environmental sustainability through multiple mechanisms: reducing total vehicle hours of delay, smoothing traffic flow to minimize acceleration-deceleration cycles, and enabling eco-driving recommendations that optimize individual vehicle trajectories. Quantifiable emission reductions from intelligent transportation systems demonstrate the environmental co-benefits of congestion management.

## 6. Challenges and Future Perspectives

### 6.1. Data Privacy and Cybersecurity

The extensive data collection underlying AI-based traffic prediction raises significant privacy concerns regarding individual mobility patterns. Location data, even when anonymized, can potentially re-identify individuals and reveal sensitive information about daily activities. Federated learning and differential privacy techniques offer promising directions for model training without centralized data collection. Cybersecurity vulnerabilities in connected infrastructure present additional risks, as compromised traffic control systems could disrupt urban mobility or create hazardous conditions.

### 6.2. Model Interpretability and Trust

Deep learning models, while achieving superior predictive accuracy, often function as black boxes whose internal reasoning remains opaque. Transportation agencies require interpretable predictions to justify control decisions and build public trust. Explainable AI techniques, including attention visualization, feature attribution methods, and surrogate models, are increasingly integrated into prediction systems to provide transparency. The trade-off between model complexity and interpretability remains an active research area with practical implications for deployment.

### 6.3. Scalability and Deployment Challenges

Scaling AI-based congestion prediction from research demonstrations to city-wide operations presents substantial challenges. Computational requirements for training complex deep learning models on extensive urban datasets demand significant infrastructure investment. Model transferability across cities with different network structures, traffic characteristics, and data availability remains limited, necessitating location-specific calibration or retraining. Integration with legacy traffic management systems requires careful interface design and often incremental deployment strategies. Addressing these scalability challenges is essential for realizing the full potential of AI-driven urban mobility optimization.

## 7. Conclusion

Artificial intelligence has fundamentally transformed traffic congestion prediction in smart cities, evolving from statistical time series methods to sophisticated deep learning architectures that capture the full complexity of urban traffic dynamics. The integration of diverse real-time data sources with advanced spatiotemporal models enables predictions that support proactive traffic management, individual traveler guidance, and environmental sustainability objectives. Hybrid architectures combining recurrent, convolutional,

graph-based, and attention mechanisms achieve the highest predictive performance by leveraging complementary strengths. Reinforcement learning extends prediction capabilities to direct control of traffic signals and management systems. Persistent challenges including data privacy, model interpretability, and scalable deployment continue to motivate research and development efforts. The trajectory of innovation points toward increasingly integrated systems where prediction, optimization, and control form a continuous closed loop, enabling truly intelligent urban mobility.

## References

- Liu X, Qin L, Xu M, Zhou Y, Wang B, Yu W, *et al.* A comprehensive review of traffic flow forecasting based on deep learning. *Neurocomputing*. 2025.
- Attioui M, Lahby M. Congestion forecasting using machine learning techniques: A systematic review. *Future Transportation*. 2025.
- Ali A, Sharafian A, Naeem HMY, Zakarya M, Wu Z, Bai X. Advanced computational models for urban traffic flow prediction: A comprehensive review and future directions. *Comput Sci Rev*. 2026;60.
- Akhtar M, Moridpour S. A review of traffic congestion prediction using artificial intelligence. *J Adv Transp*. 2021.
- Kiranyaz S, *et al.* 1D convolutional neural networks and applications: A survey. *Mech Syst Signal Process*. 2021;151.
- Polowczyk A, *et al.* Graph neural network via dynamic weights and LSTM with attention for traffic forecasting. *Procedia Comput Sci*. 2025.
- Zhang H, *et al.* Multi-scale dual dynamic spatiotemporal graph convolutional network for traffic flow prediction. *Appl Intell*. 2025.
- Wang K, *et al.* A hybrid deep learning model with 1DCNN-LSTM-attention networks for short-term traffic flow prediction. *Physica A*. 2021;583.
- Yang B, *et al.* Traffic flow prediction using LSTM with feature enhancement. *Neurocomputing*. 2019;332.
- Narmadha S, *et al.* Spatio-temporal vehicle traffic flow prediction using multivariate CNN and LSTM model. *Mater Today Proc*. 2023.
- Ma X, *et al.* Long short-term memory neural network for traffic speed prediction using remote microwave sensor data. *Transp Res Part C Emerg Technol*. 2015;54:187–197.
- Zhao Z, *et al.* LSTM network: A deep learning approach for short-term traffic forecast. *IET Intell Transp Syst*. 2017;11(2):68–75.
- STBGRN. A traffic prediction model based on spatiotemporal bidirectional gated recurrent units and graph convolutional residual networks. *Int J Comput Intell Syst*. 2024.
- Ma C, *et al.* Spatio-temporal multi-graph convolutional network based on wavelet analysis for vehicle speed prediction. *Physica A*. 2023.
- Zhang Y, *et al.* Dynamic spatial aware graph transformer for spatiotemporal traffic flow forecasting. *Knowl Based Syst*. 2024.
- Duan Z, *et al.* A hybrid deep learning based traffic flow prediction method and its understanding. *Transp Res Part C Emerg Technol*. 2018;90:166–180.
- Wu Y, *et al.* A multi-channel spatial-temporal transformer model for traffic flow forecasting. *Inf Sci*. 2024.
- Zhang J, *et al.* Long-term traffic flow forecasting using a hybrid CNN-BiLSTM model. *Eng Appl Artif Intell*. 2023;121.
- Zhang Q, *et al.* Principal graph embedding convolutional recurrent network for traffic flow prediction. *Appl Intell*. 2023.
- Wang S, *et al.* Deep neural network heuristic hierarchization for cooperative intelligent transportation fleet management. *IEEE Trans Intell Transp Syst*. 2022.
- Yang H, *et al.* Optimized structure of the traffic flow forecasting model with a deep learning approach. *IEEE Access*. 2017.
- Zhao L, *et al.* A dynamic predictive traffic signal control framework in a cross-sectional vehicle infrastructure integration environment. *IEEE Trans Intell Transp Syst*. 2019.
- Sengupta A, *et al.* A Bayesian approach to quantifying uncertainties and improving generalizability in traffic prediction models. *Transp Res Part C Emerg Technol*. 2024.
- AM-MMFF-GooGleNet. The analysis of acquisition system for electronic traffic signal in smart cities based on the internet of things. *Sci Rep*. 2025;15.
- Panigrahy S, Emany H. Reinforcement learning-based dynamic spectrum allocation in Internet of Vehicles. *IEEE Internet Things J*. 2024.
- Das P, *et al.* Decentralized traffic data verification using blockchain and deep learning. *IEEE Trans Veh Technol*. 2024.
- Prakash V, *et al.* Machine learning algorithms for intelligent transportation systems in vehicular networks. *Veh Commun*. 2024.
- Karthikeyan S, Usha J. Cognitive science-based IoT intelligent transportation framework with visual-radar multimodal data. *IEEE Sens J*. 2024.
- Oladimeji D, *et al.* Multimodal fusion for autonomous driving in complex environments. *IEEE Trans Intell Veh*. 2024.
- Zhang Y, *et al.* Asynchronous federated learning for intelligent transportation systems. *IEEE Trans Mob Comput*. 2024.
- Garg S, Kaur A. Deployment challenges of deep learning on resource-constrained devices. *ACM Comput Surv*. 2024.
- Hybrid AI-IoT-Digital Twin. Hybrid AI-IoT framework with digital twin integration for predictive urban infrastructure management in smart cities. *SciDirect*. 2025.
- Chen X, *et al.* Traffic flow prediction methods in intelligent transportation system construction. *Appl Sci*. 2025;15(7).
- Li M, *et al.* Traffic Internet framework for heterogeneous data integration. *IEEE Trans Intell Transp Syst*. 2024.
- Liu Y, Ke X. Cloud-edge collaborative IoT traffic control system. *IEEE Internet Things J*. 2024.
- Musa A, *et al.* IoT-driven intelligent transportation systems for sustainable smart cities. *Sustain Cities Soc*. 2024.
- Zeng J, *et al.* IoT sensors for emergency traffic scheduling in urban disaster management. *IEEE Trans Eng Manag*. 2024.
- Leong W. Generative AI-powered traffic and mobility

- solutions for next-generation smart cities. IEEE Conf Proc. 2025.
39. Fu R, *et al.* Using LSTM and GRU neural network methods for traffic flow prediction. J Adv Transp. 2021.
  40. Chen M, *et al.* A comprehensive survey on traffic prediction. IEEE Trans Intell Transp Syst. 2020.
  41. Ye J, *et al.* How to build a graph-based deep learning architecture in traffic domain: A survey. IEEE Trans Intell Transp Syst. 2020.
  42. Yu B, *et al.* A survey on modern deep neural network for traffic prediction: Trends, methods and challenges. IEEE Trans Knowl Data Eng. 2020.
  43. Jin F, *et al.* Traffic flow prediction models—a review of deep learning techniques. Cogent Eng. 2022.
  44. Jozefowicz R, *et al.* An empirical exploration of recurrent network architectures. In: Proc Int Conf Mach Learn (ICML). 2015.
  45. Han K, *et al.* A survey on vision transformer. IEEE Trans Pattern Anal Mach Intell. 2022.
  46. Hochreiter S, Schmidhuber J. Long short-term memory. Neural Comput. 1997;9(8):1735–1780.
  47. Chung J, *et al.* Gated feedback recurrent neural networks. In: Proc Int Conf Mach Learn (ICML). 2015.
  48. Vaswani A, *et al.* Attention is all you need. In: Adv Neural Inf Process Syst (NeurIPS). 2017.
  49. Kipf TN, Welling M. Semi-supervised classification with graph convolutional networks. In: Int Conf Learn Represent (ICLR). 2017.
  50. Velickovic P, *et al.* Graph attention networks. In: Int Conf Learn Represent (ICLR). 2018.

#### How to Cite This Article

Alhajri WN. AI-based traffic congestion prediction in smart cities: machine learning architectures, real-time data integration, and intelligent urban mobility optimization systems. JFMR. 2026;7(1):120-125. doi:10.54660/JFMR.2026.7.1.120-125.

#### Creative Commons (CC) License

This is an open access journal, and articles are distributed under the terms of the Creative Commons Attribution Non-Commercial Share Alike 4.0 International (CC BY-NC-SA 4.0) License, which allows others to remix, tweak, and build upon the work non-commercially, as long as appropriate credit is given and the new creations are licensed under the identical terms.